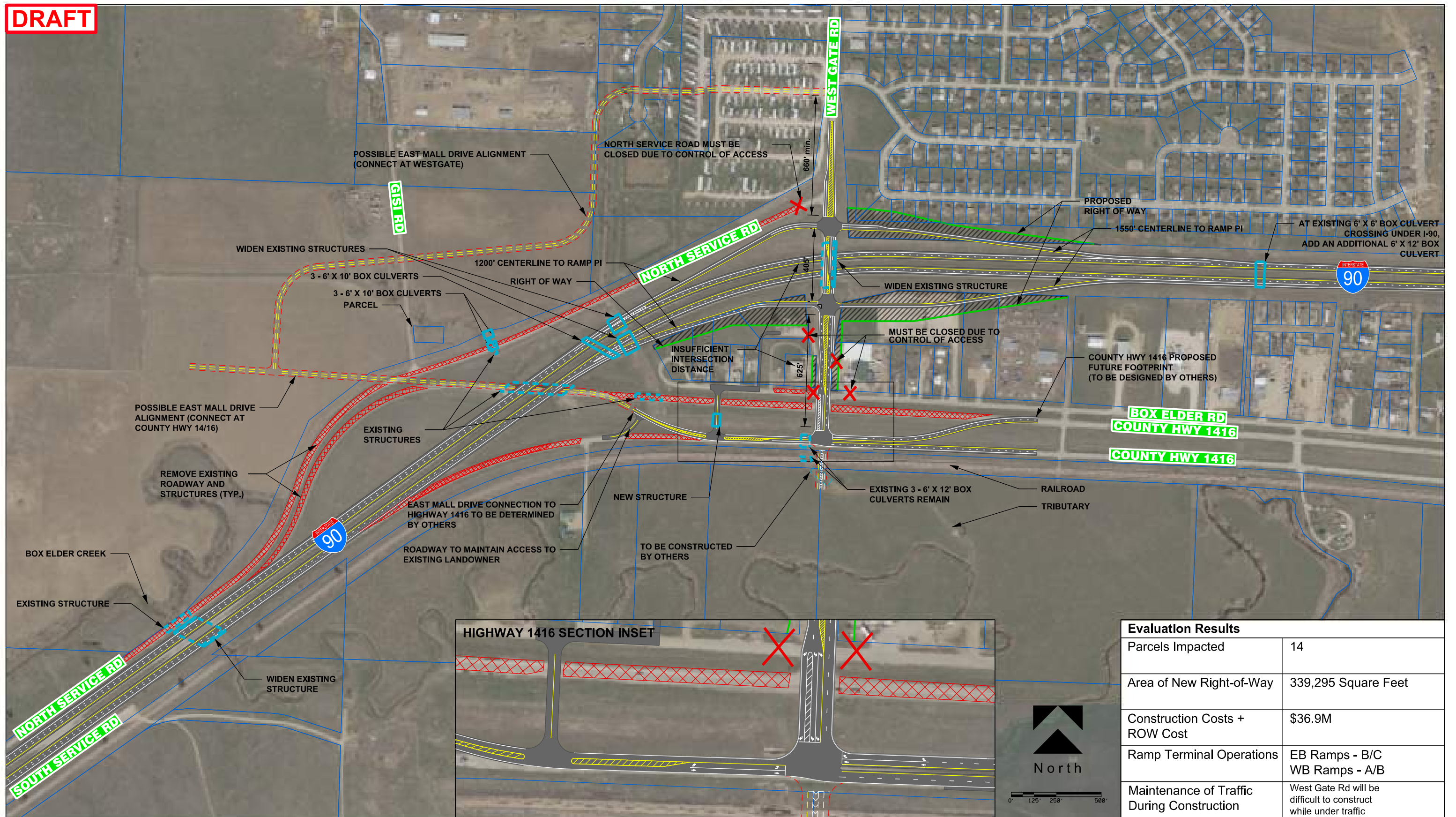


**DRAFT**

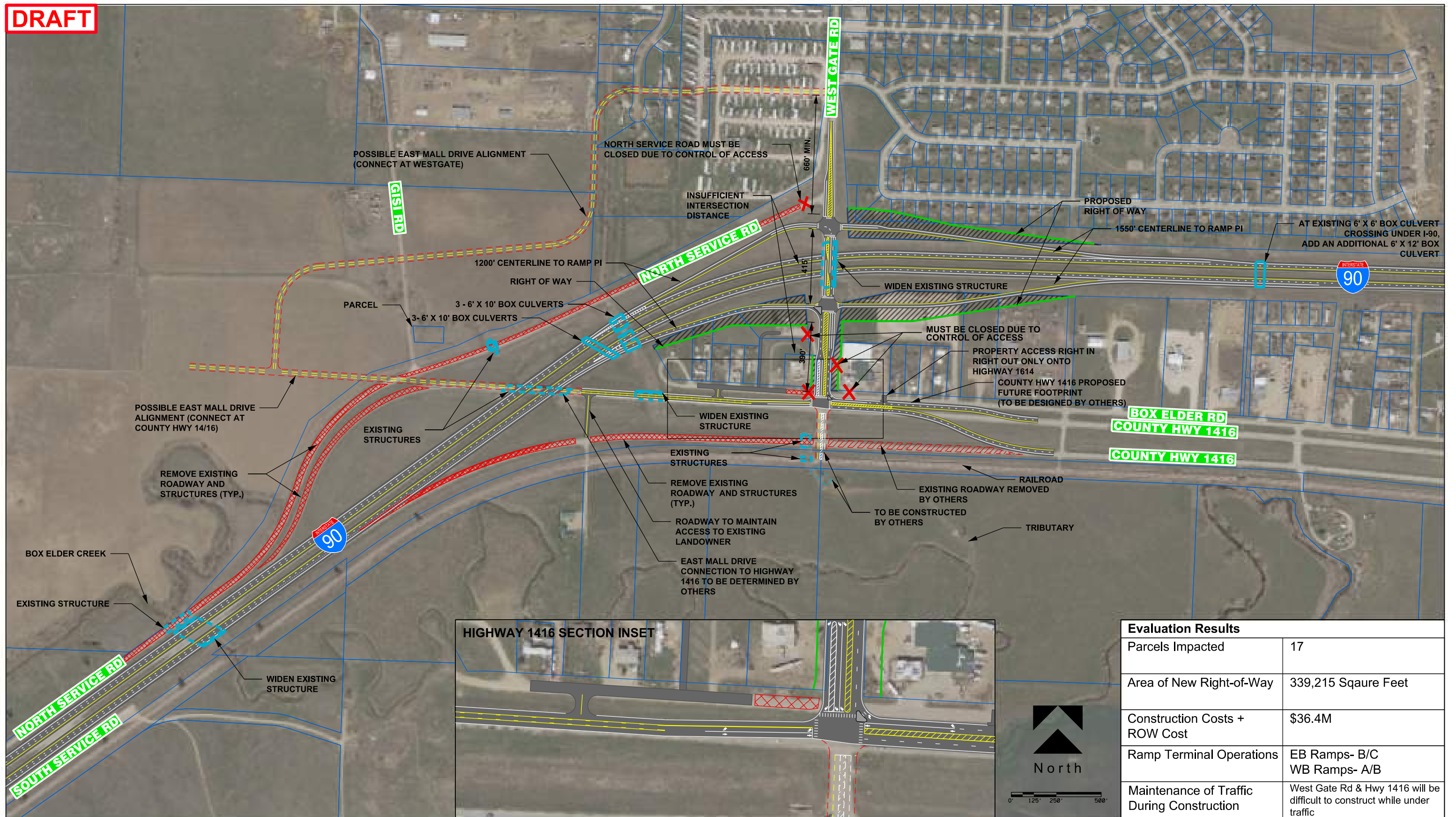


Evaluation Results	
Parcels Impacted	14
Area of New Right-of-Way	339,295 Square Feet
Construction Costs + ROW Cost	\$36.9M
Ramp Terminal Operations	EB Ramps - B/C WB Ramps - A/B
Maintenance of Traffic During Construction	West Gate Rd will be difficult to construct while under traffic



# I-90 EXIT 63 FEASIBLE OPTION 1a: WEST GATE ROAD DIAMOND INTERCHANGE (SOUTH HWY 1416 SECTION)

**DRAFT**

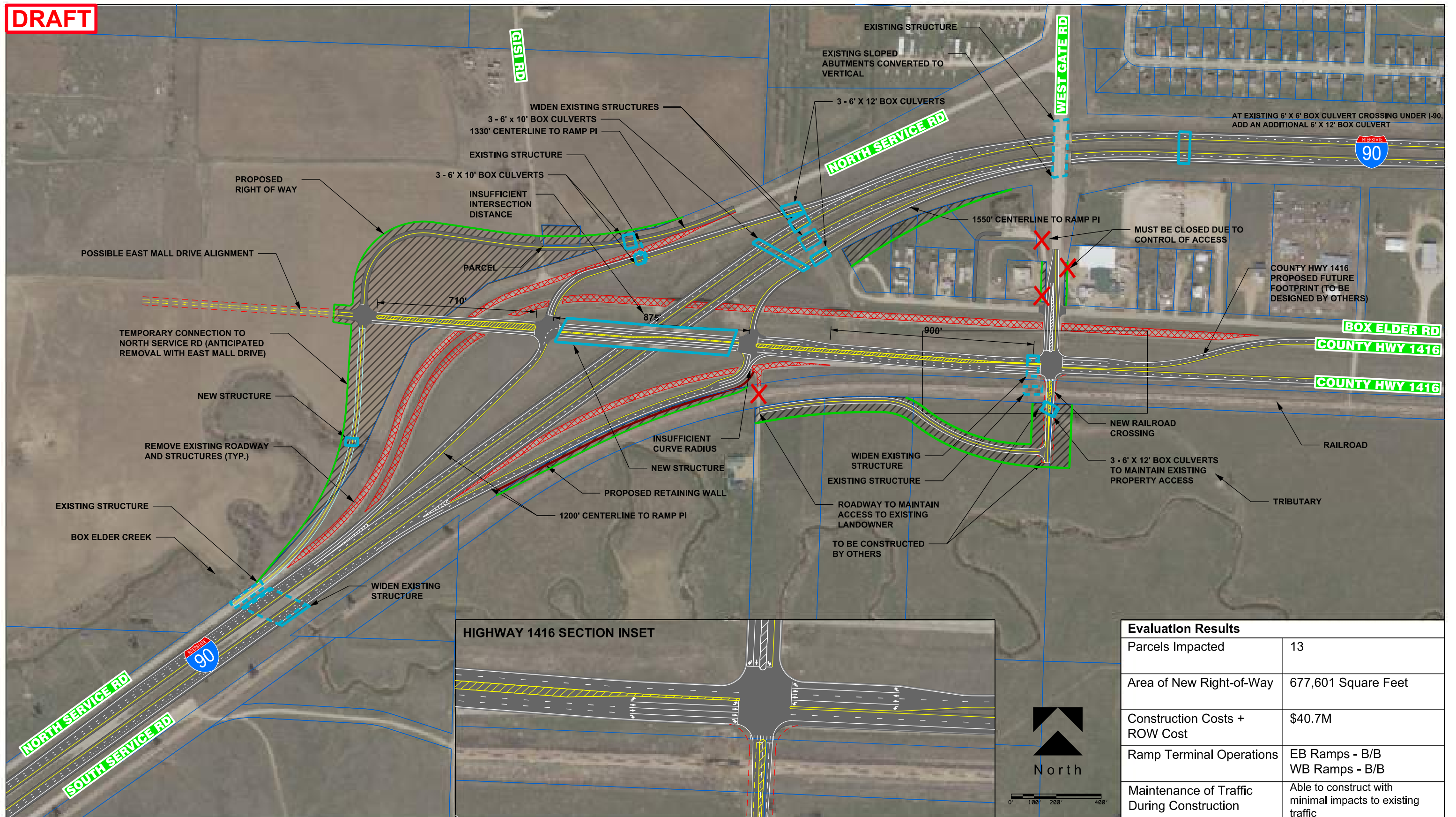


Evaluation Results	
Parcels Impacted	17
Area of New Right-of-Way	339,215 Square Feet
Construction Costs + ROW Cost	\$36.4M
Ramp Terminal Operations	EB Ramps- B/C WB Ramps- A/B
Maintenance of Traffic During Construction	West Gate Rd & Hwy 1416 will be difficult to construct while under traffic



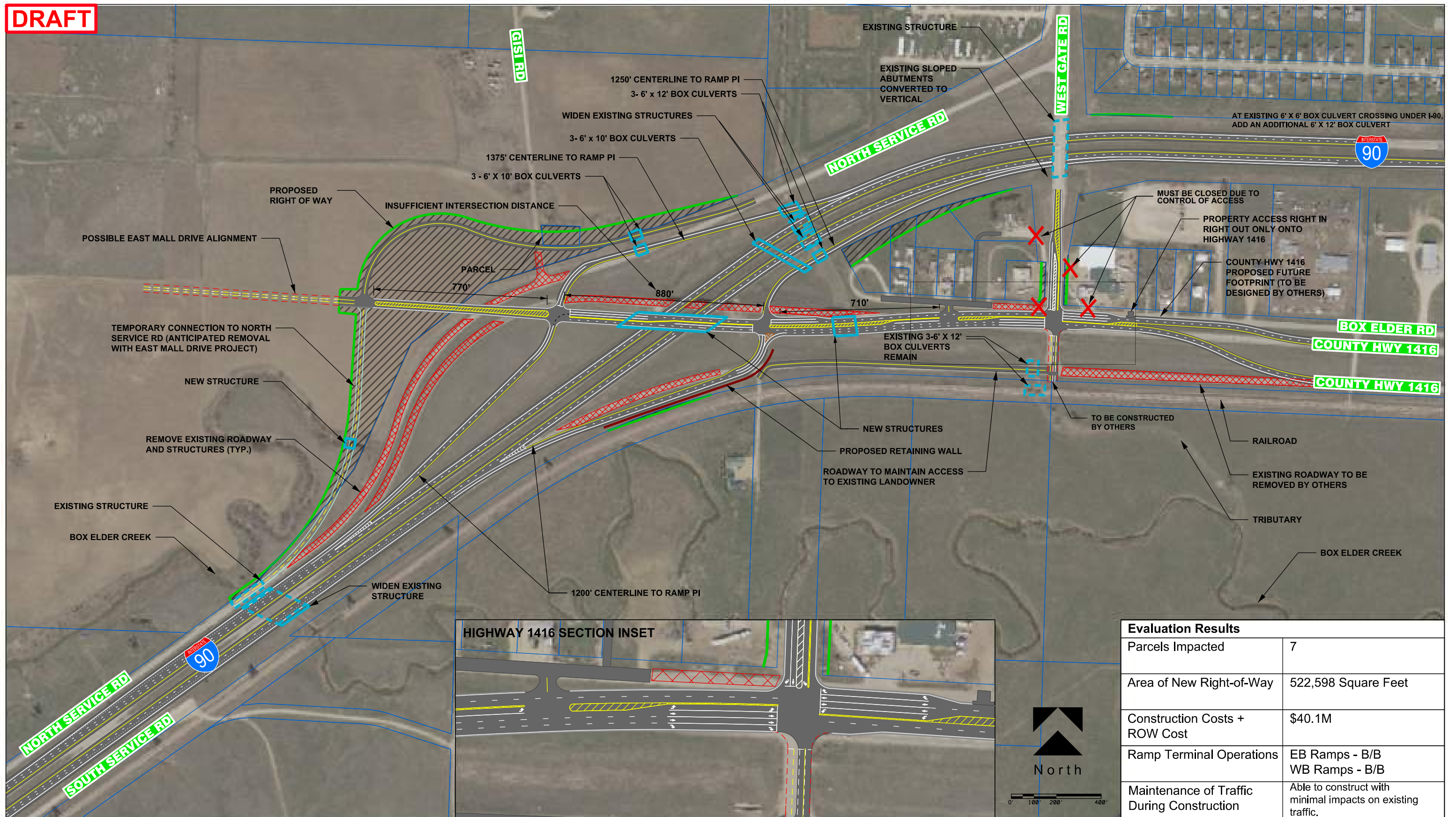
# I-90 EXIT 63 FEASIBLE OPTION 1b: WEST GATE ROAD DIAMOND INTERCHANGE (NORTH HWY 1416 SECTION)

**DRAFT**



# I-90 EXIT 63 FEASIBLE OPTION 2a: COUNTY HIGHWAY 1416 DIAMOND INTERCHANGE (SOUTH HWY 1416 SECTION)

**DRAFT**

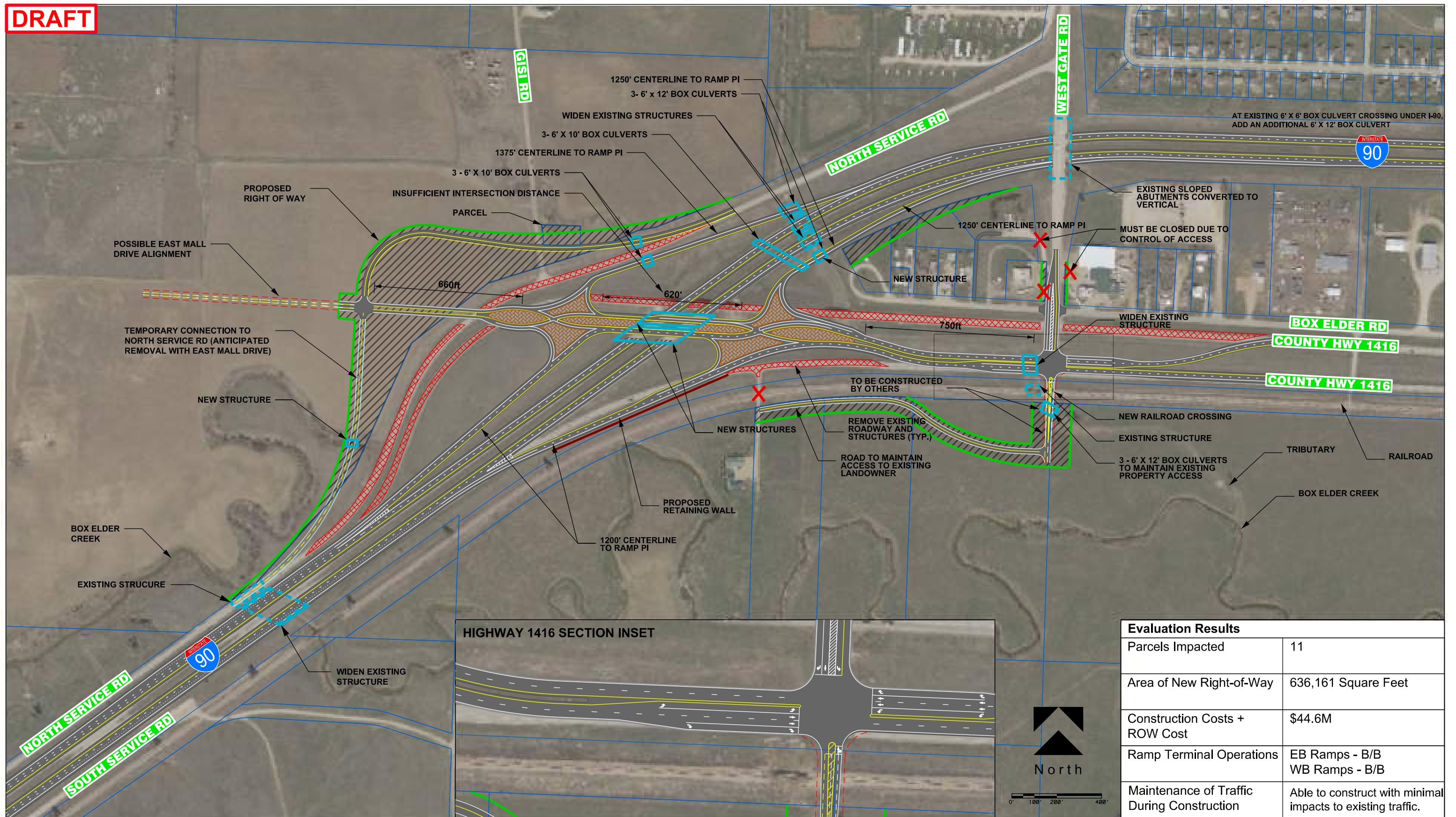


Evaluation Results	
Parcels Impacted	7
Area of New Right-of-Way	522,598 Square Feet
Construction Costs + ROW Cost	\$40.1M
Ramp Terminal Operations	EB Ramps - B/B WB Ramps - B/B
Maintenance of Traffic During Construction	Able to construct with minimal impacts on existing traffic.



# I-90 EXIT 63 FEASIBLE OPTION 2b: COUNTY HIGHWAY 1416 DIAMOND INTERCHANGE (NORTH HWY 1416 SECTION)

**DRAFT**

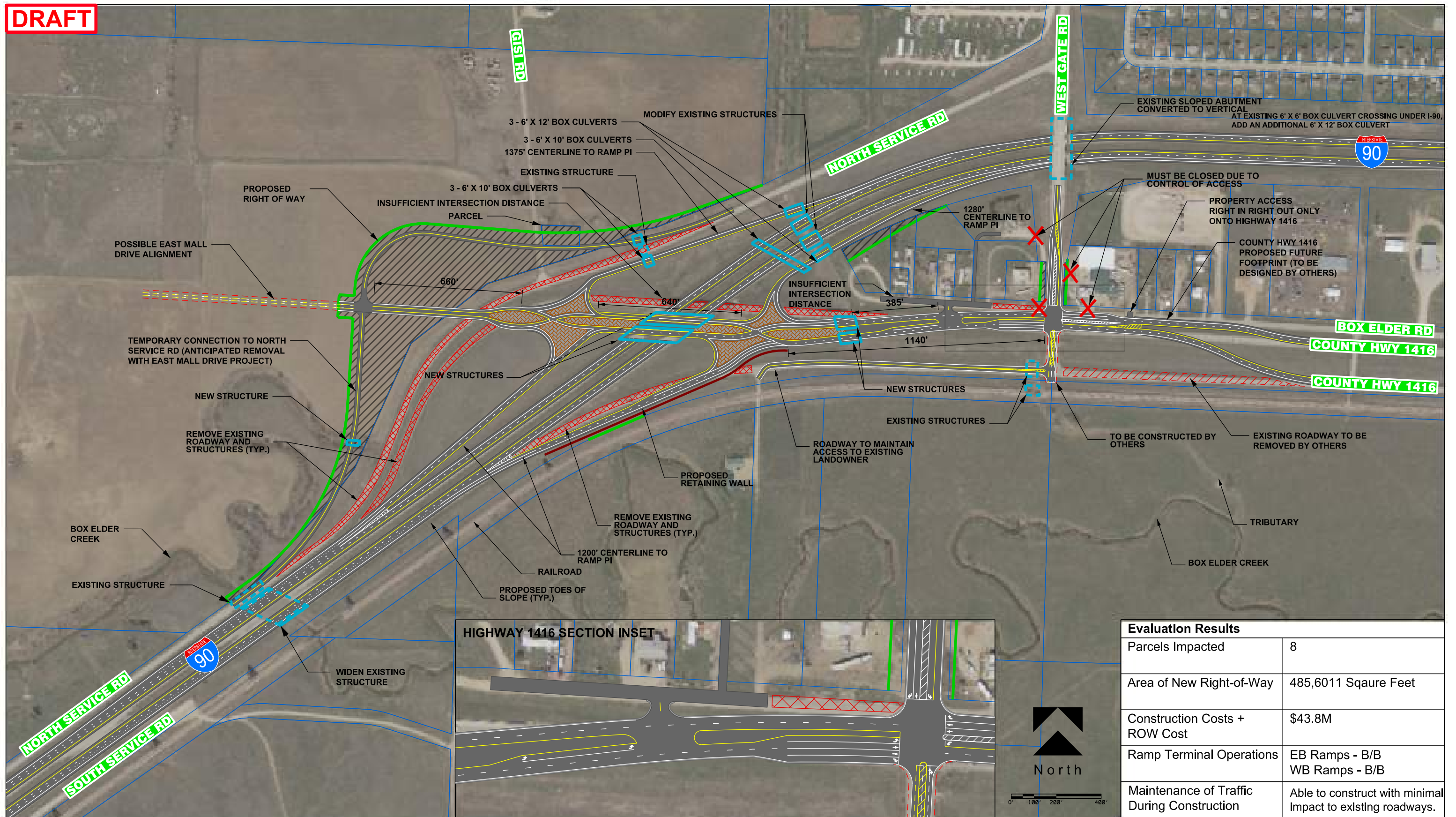


Evaluation Results	
Parcels Impacted	11
Area of New Right-of-Way	636,161 Square Feet
Construction Costs + ROW Cost	\$44.6M
Ramp Terminal Operations	EB Ramps - B/B WB Ramps - B/B
Maintenance of Traffic During Construction	Able to construct with minimal impacts to existing traffic.



# I-90 EXIT 63 FEASIBLE OPTION 3a: DIVERGING DIAMOND INTERCHANGE (SOUTH HWY 1416 SECTION)

**DRAFT**

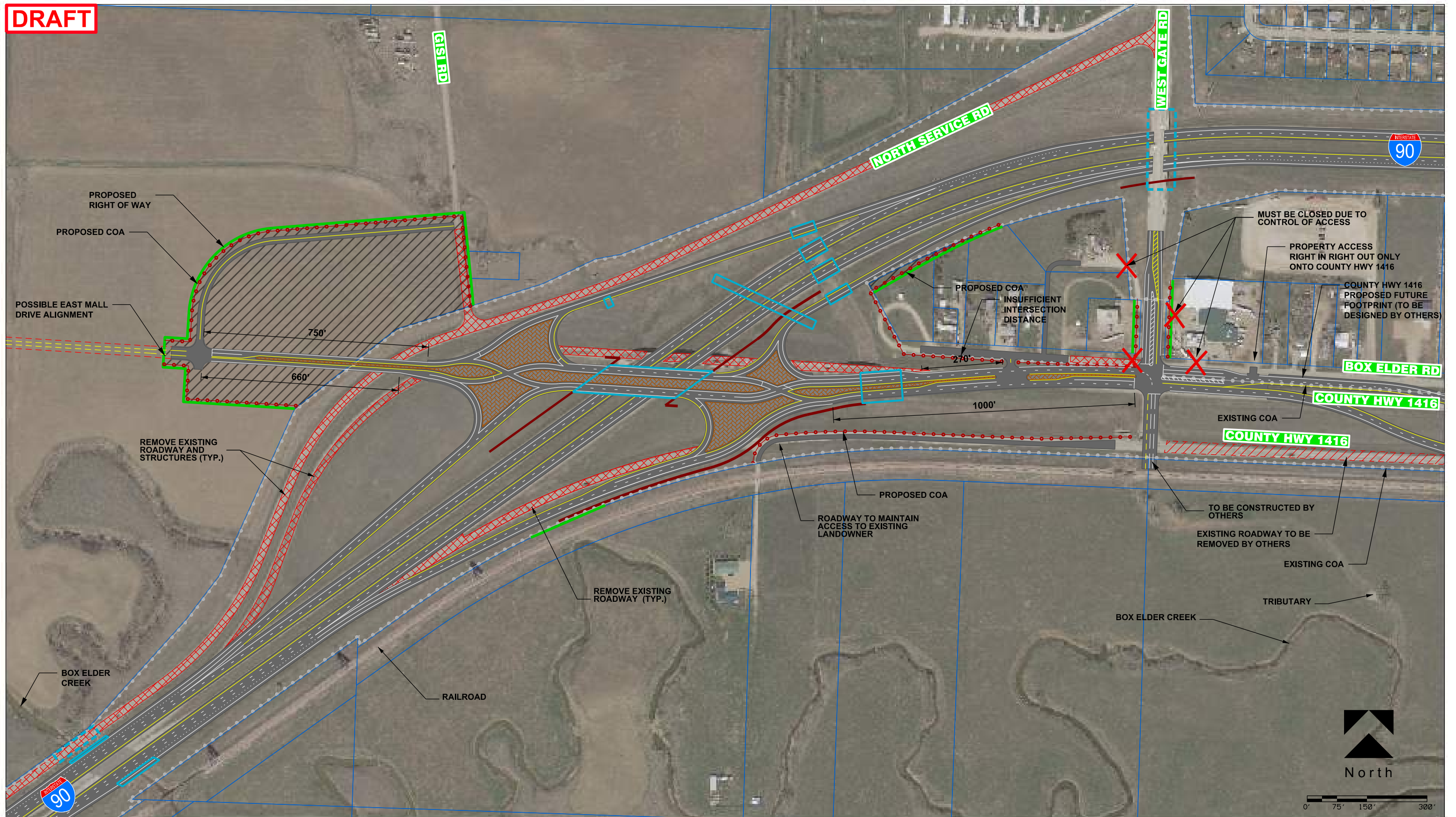


Evaluation Results	
Parcels Impacted	8
Area of New Right-of-Way	485,6011 Sqaure Feet
Construction Costs + ROW Cost	\$43.8M
Ramp Terminal Operations	EB Ramps - B/B WB Ramps - B/B
Maintenance of Traffic During Construction	Able to construct with minimal impact to existing roadways.



# I-90 EXIT 63 FEASIBLE OPTION 3b: DIVERGING DIAMOND INTERCHANGE (NORTH HWY 1416 SECTION)

**DRAFT**

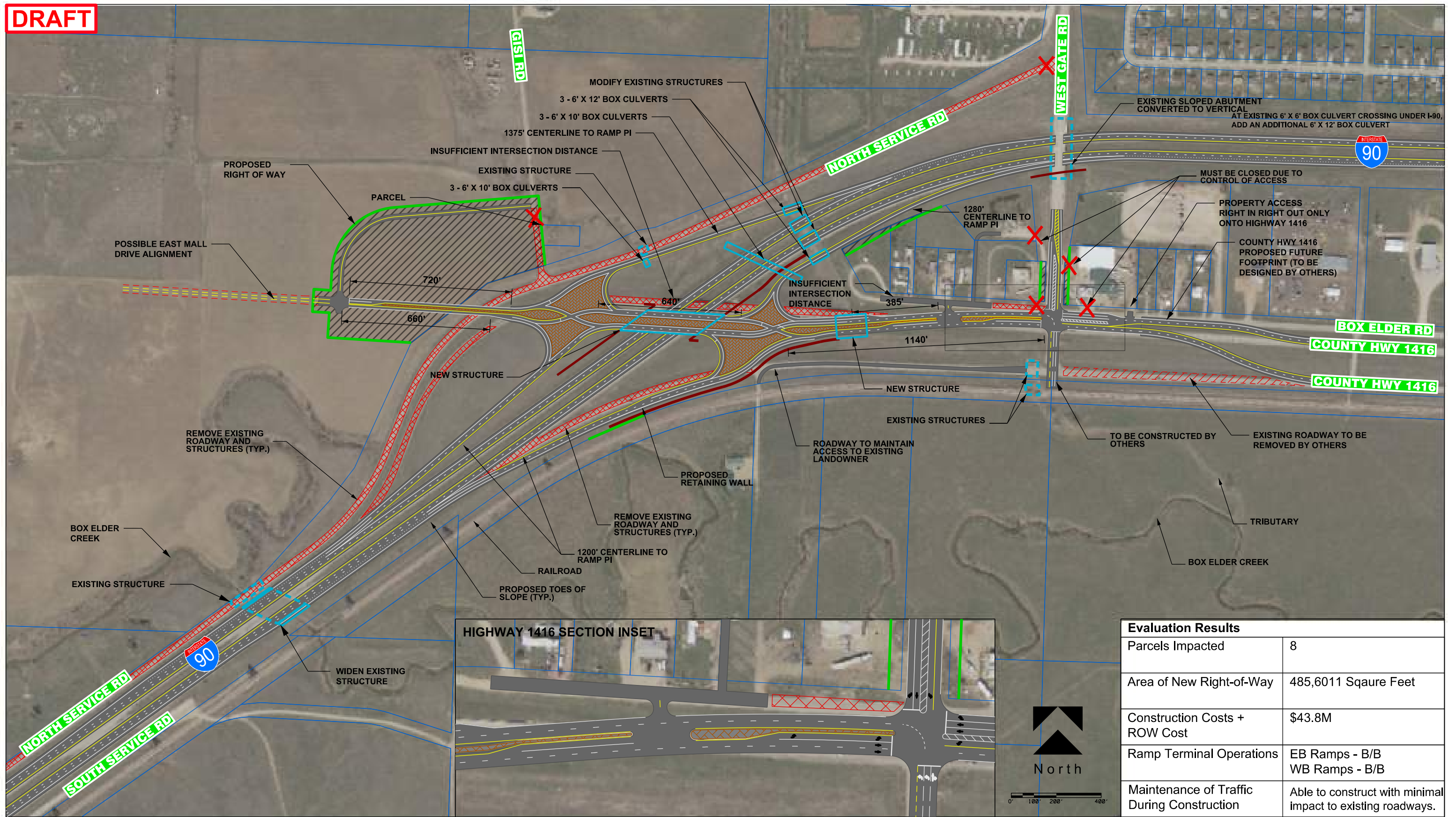


### I-90 EXIT 63

## TECHNICALLY FEASIBLE OPTION: CONTROL OF ACCESS



**DRAFT**



Evaluation Results	
Parcels Impacted	8
Area of New Right-of-Way	485,6011 Sqaure Feet
Construction Costs + ROW Cost	\$43.8M
Ramp Terminal Operations	EB Ramps - B/B WB Ramps - B/B
Maintenance of Traffic During Construction	Able to construct with minimal impact to existing roadways.



# I-90 EXIT 63 TECHNICALLY FEASIBLE ALTERNATIVE: DIVERGING DIAMOND INTERCHANGE